

*2025-2026  
North Dakota  
Hereford Directory*



# MRNAK

*Annual Production Sale*  
January • Bowman, ND

## *Sale Includes*

- 🔪 Performance Tested, Horned & Polled  
Two Year Old & Fall Yearling Bulls
- 🔪 Elite Mrnak Hereford Registered Bred Heifers
- 🔪 Mrnak Commercial Hereford Bred Heifers
- 🔪 Mrnak Influenced Baldy Replacement Heifers



POWERFUL.

PRODUCTIVE.

PERFORMANCE.

## *Contacts*

Brent Mrnak • 701.206.0604

Jenna Mrnak • 701.290.7218

Terry Mrnak • 701.523.6386

Andy Mrnak • 701.206.1095

John Andras • 406.670.5074

**DVAuction**  
Broadcasting Real-Time Auctions

[mrnakherefords.com](http://mrnakherefords.com)

# UU Big Sky 3124L



#44463468

BW 3.1 WW 66 YW 99 M 44 MG 77 Fat .023 REA .69 Marb .36

Our choice at the 2024 Van Newkirk Sale. Extra long with plenty of rib and thickness.

— ASSISTED BY —

H5 9241 Advance 3123

#44460234

BW 0.9 WW 60 YW 101 M 28

MG 58 Fat .023 REA .73 Marb .32

Heifer bull from Harrell Hereford Ranch

— USED A.I. —

HH Advance 3004L

#44454152

BW 1.0 WW 65 YW 98 M 37

MG 69 Fat .063 REA .44 Marb .62

Low BW, High Marbling

HH Advance 3044L ET

#44454189

BW 3.0 WW 61 YW 90 M 38

MG 69 Fat .043 REA .53 Marb .33

Super thick

## Sale Second Wednesday in February • Stockmens West, Dickinson, ND

Join us at the ranch on the fall

2025 MT/ND Hereford Tour

*Where you can buy with confidence!*



For more information or a catalog contact:

Gary & Kirsten • 701-824-2300

701-290-7231 (Gary) • gfriedt@hotmail.com

Megan & Dusty Dukart • 701-290-7230 (Megan)

701-730-4335 (Dustin)

Aaron & Tatian Friedt • 701-590-9597 (Aaron)

Lindsey & Drew Courtney

8733 55th St SW, Mott, ND 58646

[www.friedtherefords.com](http://www.friedtherefords.com)

# DAKITCH FARMS

---

REGISTERED HEREFORDS SINCE 1959  
VISITORS ALWAYS WELCOME!

*Moonshine*



ANNUAL  
PRODUCTION  
SALE  
THIRD  
SATURDAY IN  
MARCH

DAKITCH 123F MOONSHINE 144L REG# 44444876

*Mr. Karen*

FALL  
ONLINE  
FEMALE  
SALE  
OCTOBER  
2025



DAKITCH MDK 125F MR. KAREN 10L REG# 44441436

---

MATTHEW & DARCI, DAWSON, DUTTON KITCHELL

1997 355TH ST  
ADA, MN 56510  
701-799-7690

[WWW.DAKITCHFARMS.COM](http://WWW.DAKITCHFARMS.COM)



2025-2026 North Dakota Hereford Directory

# DONNELLY

VALLEY CITY, ND

**OPENS + BREDS + BULLS**  
AVAILABLE PRIVATE TREATY ANNUALLY

# FARMS



JDH AH Old Fashioned was the high selling bull at the 2025 NWSS Hereford Sale and is now co-owned with "The Old Fashioned Group." *Semen available to purchase Spring of 2025.*

## JDH AH **OLD FASHIONED** 25M ET

AHA #: 44555393 // OWNED WITH "THE OLD FASHIONED GROUP"  
C ARLO 2135 ET X AH MS 25L RUMBLER 19Z



## DF **LADY TALLULA** TIL ET

AHA #: P44480878

CH HIGH ROLLER 756 ET X NORDS TALLULA 814F ET

DF Lady Tallula will be added to our donor pen this year after a very successful show career, most notable, Reserve Champion Hereford at the MN State Fair. *Look for progeny and full sibs for sale fall of 2025.*



## DONNELLY FARMS

DAN DONNELLY 651.353.7282  
VALLEY CITY, ND

DAVID DONNELLY 651.855.8387  
FARMINGTON, MN

# 2025-2026 North Dakota Hereford Directory

Published every other year by the  
**North Dakota Hereford Association**

Joana Friesz, secretary

PO Box 67

New Salem, ND 58563

701-400-8744 or 701-843-8744

E-mail: [joana@northlandinsuranceagency.com](mailto:joana@northlandinsuranceagency.com)

#### AD DESIGN & PRODUCTION BY:

Hereford America · 605/866-4495 · [www.HerefordAmerica.com](http://www.HerefordAmerica.com)

Cover photo by Casey St. Blanc at Stroh Herefords, Killdeer, ND

---

YEARLING BULLS &  
REPLACEMENT FEMALES

*for sale by private treaty*

---



Find us on Facebook!  
[facebook.com/HeartFHerefords](https://facebook.com/HeartFHerefords)



Visitors always  
welcome!

Aaron & Sara Friesz  
7450 59th St SW  
New Leipzig, ND 58562

(701)584-2978  
[friesz.sara@yahoo.com](mailto:friesz.sara@yahoo.com)

# North Dakota Hereford Association

## *Board of Directors*

President: Dan Donnelly

Vice Pres.: Walter Jones

Sec./Treas.: Joana K. Friesz

P.O. Box 67 / New Salem, ND 58563 / 701-400-8744 or 701-843-8744

Directors:

Bill Smith, Larissa Tessier, Lillie Basaraba,  
Logan Behm, Don Neshem, Sara Friesz, Shane Giedd



Pictured left to right are Joana Friesz, Larissa Tessier, Bill Smith, Lillie Basaraba, Dan Donnelly, Don Nesham and Walter Jones.

# North Dakota Hereford Association

## 2024 Donation Heifer

Donated by Wolff Cattle Company  
won by the Friesz Sisters,  
New Leipzig, ND



**WCC 35H MISS HOMEGROWN 35M**

DOB: 4/13/24 | Reg: 44616529

Sire: PYRAMID HOMEGROWN 0251

Dam: WCC 17Z MISS INVESTOR 35H



The Friesz girls were the winners of the  
donated heifer!

## Important Dates

### Annual Meeting/Banquet

August 23, 2025

August 22, 2026

Morton County Fairgrounds, New Salem, ND

held in conjunction with

**NDJHA field day.**

**2nd annual**

**Northern Select Online Sale, December 9, 2025**



# North Dakota Jr. Hereford Association *Queen & Princess*

## Queen

Olivia Waddington

I am Olivia Waddington, and I will be serving as the 2025 North Dakota Hereford Queen.

The journey to building my Hereford Herd began when I was little. I would buy, raise, and sell bottle lambs and bummer calves, which helped me to build a small mixed breed herd of cattle. I eventually sold these and bought the Herefords that I had wanted since I was little.

I have always had a strong interest in raising livestock, and I am pursuing a long-term career in the livestock industry. I plan to continue building my ranch and improving my stock.

I am excited to serve as the North Dakota Hereford Queen and I plan to attend bull sales, County Fairs, and help with the North Dakota Junior Hereford Field Day.

I would like to thank all of the people who have helped me so much with my livestock ventures!



## Princess

Mika Stuber

Hi! I'm Mika Stuber and I am serving as your 2025 North Dakota Hereford Princess! I am 16 and a sophomore at Bowman County High School.

I am involved in FFA, 4-H, showing livestock, band, choir, volleyball, and stat for wrestling. I am the fifth generation on Stuber Ranch. I show Hereford Cattle and Boer goats. In the next year as Hereford princess, I would like to get more youth involved in the NDJHA and educate people about the Hereford breed! I could not be more excited and honored to serve as your 2025 Hereford Princess and can't wait to see what's in store!



.....

NDJHA Field Day

August 23, 2025

Morton County Fairgrounds, New Salem, ND held in conjunction with

NDHA Annual Meeting and Banquet.

(2026 Date is August 22.)

# RIVER AG

2584 INDUSTRIAL DR.  
WASHBURN, ND 58577



701-462-7333

River AG is a well-established agricultural business based in Washburn, ND, specializing in providing a range of services and products to support local farmers and ranchers.

With a focus on sustainability and quality, River AG offers solutions for crop production, livestock care, and land management in the region.



**A SPECIAL THANK YOU  
TO OUR GENEROUS  
SPONSORS**



*North Dakota Junior Hereford Association*

Nelson Sunrise Ranch

Winter Ranch

Heart F Herefords

Pelton Polled Herefords

Midway Polled Herefords

Mrnak Ranch

Butler Machinery Co.

ND Hereford Assoc.

Trans Trash, Mandan

Flath Herefords

JS Ranch

Bailey Ranch

Stuber Ranch

WJ Herefords

Wolff Cattle Company

Kist Livestock

Friesz Livestock

Baumgarten Cattle Company

BQ Ranch

Gemar Farms

SW Grain, Elgin

Friesz Seed, New Leipzig

Friedt Herefords

Southwest Ag. Inc, Bowman

Rath Cattle Company

Coffin Butte Farm & Ranch

TK Vet Services, Glen Ullin

Giedd Hereford Ranch

G6 Mini Herefords

**Junior Advisors:**

**Sara & Aaron Friesz**

# BAUMGARTEN CATTLE CO.

BCC TAMA 1175J DLF,HYF,IEF,MSUDF



CE -8.0  
BW 6.4  
WW 65  
YW 100  
M 32  
MG 64  
REA .79  
MRB -.01

BCC L1 DOMINETTE 454B DOD,DLF,HYF,IEF,MSUDF



CE 3.5  
BW 2.8  
WW 51  
YW 82  
M 28  
MG 53  
REA .27  
MRB .15

BCC MISS DEMAND 976G DOD,DLF,HYF,IEF,MSUDF



CE -6.7  
BW 6.2  
WW 69  
YW 110  
M 45  
MG 79  
REA .62  
MRB -.01

110 YEARS OF  
REGISTERED  
HEREFORDS

**Horned  
and Polled  
Genetics**

**Performance  
Oriented,  
Maternal Driven**

**ANNUAL  
BULL SALE  
AT THE  
RANCH**

**FEB. 7, 2025  
FEB. 6, 2026**

**Selling 80 Bulls,  
Registered  
Bred Heifers,  
Commercial  
Hereford Heifers,  
Black Baldy  
Heifers**

4260 127th Ave. SW • Belfield, ND 58622

Catalog and videos on [www.baumgartencattle.com](http://www.baumgartencattle.com)

Rollie 701.290.3469 • Jake 701.290.3450 • [trbaumgarten@yahoo.com](mailto:trbaumgarten@yahoo.com)

**W  
L**

# FLATH HEREFORDS

**L  
X**

1431 33S Ave NW      Mark: 701-337-6793  
Coleharbor, ND 58531      Richard

— QUALITY BULLS AND HEIFERS —

## FOR SALE PRIVATE TREATY

**Two-Year-Old Bulls  
Yearling Replacement Heifers  
100% Horned Herefords**

— Herd Sires —

**CL 1 Domino 1154J**

CE 2.1 BW 2.5 WW 68 YW 102 M 26 MG 60

**LW 7131 Domino 1039J**

CE 0.8 BW 5.0 WW 69 YW 114 M 35 MG 69

**LW 8108 Domino 068H**

CE 5.6 BW 2.1 WW 59 YW 99 M 28 MG 58

**KC L1 Domino 17008**

CE 7.7 BW 1.7 WW 53 YW 85 M 24 MG 51

**KC L1 Domino 19044**

CE 2.7 BW 4.1 WW 61 YW 95 M 27 MG 57

**KC L1 Domino 23053**

CE -0.7 BW 6.1 WW 69 YW 120 M 25 MG 59

**CL1 Domino 3265L 1ET**

CE 11.6 BW -0.5 WW 45 YW 79 M 24 MG 47

— Cowherd —

Cooper — Hensen — Carmichael — L Bar W

*Medium Frame — Mellow*

**W  
L****L  
X**

# HELBLING HEREFORDS



## H L1 DOMINO 7079E

CED -4.9 BW 3.3 WW 57 YW 92 M 30 MG 58 REA .38 MRB .02 CHBS 110

CL 1 DOMINO 2215Z 1ET (DLFHYE)IEF	CL 1 DOMINO 862U (CHB, DLE)IEF	CL 1 DOMINO 637S 1ET (CHB)
H L1 DOMINETTE 0051X	CL 1 DOMINETTE 5142R (DOD, DLEHYE)IEF	CL 1 DOMINETTE 5131R (DLEHYE)IEF
	KB L1 DOMINO 311 (CHB, SOD, DLE)IEF	CL 1 DOMINO 1172L
	H L1 DOMINETTE 2001	CL 1 DOMINETTE 810H
		CL 1 DOMINO 484 (SOD, DLE, HYE)IEF
		MONTANA MISS 1134
		HH ADVANCE 767G 1ET (SOD, DLE)IEF
		H L1 DOMINETTE 0102

## FOR SALE PRIVATE TREATY YEARLING AND TWO-YEAR-OLD BULLS REGISTERED AND COMMERCIAL HEIFERS COMMERCIAL BRED HEIFERS

Bred to LBW Black Angus bulls available after Oct. 15.

**SIRES:** CL 1 Domino 2215Z, HH Advance 3172A, CL 1 Domino 6104D,  
H L1 Domino 4215B, KC L1 Domino 7008E and HH Advance 8017F



**Jim:** 701-516-7479    **Fred:** 701-400-1880    **Wayne:** 701-471-4391

4785 Co. Rd. 83, Mandan, ND 58554  
E-mail: 400herefords@gmail.com

# POLLESTAD HEREFORDS



**SINCE 1921**

**Call or Write Today!**

[pollestad@ndsupernet.com](mailto:pollestad@ndsupernet.com)

2525 92nd Ave SW, Taylor, ND 58656

(701) 974-3970



Find us on Facebook

Pollestad Herefords is a fourth generation herd that has been raising registered horned Herefords for nearly 100 years. We concentrate on raising easy fleshing and well muscled cattle with genetics that come from the US, Canada, and England. Please contact us anytime for more information.



# EF1

Cattle Co  
CARPIO, NORTH DAKOTA

## Online PRODUCTION SALE

OPEN HOUSE

February 26, 2025, 1 pm - 4 pm

ONLINE BIDDING OPENS SUNDAY, FEBRUARY 23RD.  
HORSE RACE STYLE CLOSING FEBRUARY 26TH AT 4 PM CST.

AT THE RANCH, SOUTHEAST OF CARPIO, ND

20 STOUT HORNED HEREFORD  
TWO-YEAR-OLD BULLS  
PLUS A BONUS FEMALE LOT!



Scan QR Code to Request a Catalog & to Register to Bid Online

TRAVIS & SUMMER, ISABEL, GUS, GEORGE, HAZEL ENGELHARD  
TRAVIS (701) 833-9699 | EF1CATTLE@GMAIL.COM | EF1CATTLECO.COM  
FOLLOW US ON INSTAGRAM AND FACEBOOK!



# TESSIER HEREFORDS

Annual Bull & Female Sale First Saturday in March  
At the Ranch Headquarters, 6 miles south of Belfield, ND



## TH 529B 358C PIONEER 182E

43818767 · 1/30/17  
Sire: TH 403A 475Z  
Pioneer 358C ET  
CE 6.2 BW 0.1 WW 53  
YW 84 M 34 MG 61  
REA .39 MRB -.02 CHBS 84

## SNOWSHOE 42Z RUFFNECK X33 08C

P43618582 · 2/7/15  
Sire: SNOWSHOE 31U  
TUFF 31S 42Z  
CE -3.9 BW 6.1 WW 60  
YW 103 M 30 MG 60  
REA .85 MRB -.04 CHBS 121



Our bulls are raised on native prairie grass and mother's milk  
in the Badlands of Southwest North Dakota.

**Buy with confidence knowing these bulls won't fall apart.**

*Foundation female*



## TH 157A 3X VERONICA 78C

Sire: TH 49U 719T Sheyenne 3X  
MGS: TH 22R 16S Lambeau 17Y

# TESSIER HEREFORDS

12950 43rd St. SW, Belfield, ND 58622

Zach Tessier · 701-290-6132

Larissa Tessier · 701-290-1435

[www.tessierherefords.com](http://www.tessierherefords.com)

E-mail: [bullrider\\_169@hotmail.com](mailto:bullrider_169@hotmail.com)

Find us on Facebook





# MIDWAY *Since 1953*

## POLLED HEREFORDS

Our cattle come from our herd of 200 registered Polled Herefords. We specialize in producing rugged, range-raised two-year-old bulls. Our females are bred for longevity and trouble-free udders.

We also produce about 50 commercial Angus and black-baldy females, which are for sale.

### HERD SIRES:

*from Mohican West*  
by INNISFAIL WRH X651/723-4013  
**MOHICAN 4013 97G**

*Homozygous Polled*  
BW 7.2 WW 78 YW 125 M 27 CHB\$ 141

*from Pelton Polled Herefords*  
by R EXCITEMENT 4356  
**CKP EXCITMENT 9086**  
BW 2.1 WW 79 YW 114 M 31 CHB\$ 140

### NEW SIRES:

*from Feddes Herefords*  
by WHITEHAWK WARRIOR 845C  
**F WARRIOR 005**

*Polled*  
BW 1.3 WW 74 YW 114 M 40 CHB\$ 162

*from Sandhill Farms*  
by SHF EVERSTONE Z311 E156  
**SHF HYDROGEN E156 H199**  
*Homozygous Polled*  
BW 6.9 WW 80 YW 130 M 36 CHB\$ 151

*from Rausch Herefords*  
BY HYALITE RESOURCE 774  
**R ADDITION 6110**  
*Homozygous Polled*  
BW 4.7 WW 84 YW 141 M 29 CHB\$ 149

*from Pelton Polled Herefods*  
by HH ILR FORWARD 1056J ET  
**CKP POINT GUARD 3234**  
BW 5.3 WW 73 YW 115 M 34 CHB\$ 97

*from Feddes Herefords*  
by BG LCC 11B PERFECTO 84F  
**F PERFECT STORM 277**  
*Homozygous Polled*  
BW 0.0 WW 64 YW 103 M 45 CHB\$ 131

*from Baumgarten Cattle Co.*  
by SHF HOUSTON D287 H086  
**BCC ASTRO 2310K ET**  
*Polled*  
BW 2.4 WW 71 YW 116 M 34 CHB\$ 162

*from Feddes Herefords*  
by JW 1857 Merit 2113A  
**F MERIT 354**  
*Polled*  
BW 0.9 WW 71 YW 110 M 34 CHB\$ 186

*from NJW Polled Herefords*  
BY NJW ENDURE 173D  
**NJW 77F 173D ENDURE 84L**  
*Polled*  
BW 5.7 WW 69 YW 116 M 31 CHB\$ 145

*from Mohican West*  
by INNISFAIL WRH X651/723-4013  
**Mohican 4013 38L**  
BW 3.8 WW 77 YW 121 M 24 CHB\$ 174

**40 two-year-old bulls and  
40 registered yearling heifers available at private treaty.**

**TOP QUALITY WORKING CATTLE BRED AND FED  
WITH THE COMMERCIAL CATTLEMAN IN MIND.**

For more information contact:

*Visitors always welcome*

## Midway Polled Herefords

Bill and Karen Smith: home (701) 996-3300 • cell (701) 302-0254 • midwayph@gondtc.com  
Herdsman Jake Burkhardtsmeier: home (701) 996-3600 • cell (701) 650-8906  
7480 26th St., Sheyenne, ND 58374 (2.5 miles south and 5.5 miles east of Sheyenne).



# THE MILL LLC.

FEED FOR ALL LIVESTOCK

## PRODUCTS WE CREATE JUST FOR YOU

- ✓ Calf Starter & Creep Feed
- ✓ Cow Cake
- ✓ Pelleted Mineral
- ✓ Bull & Heifer Developer Feed
- ✓ Lamb & Goat Feed
- ✓ Any Custom Mixes



### CONTACT US AT

- ☎ 701-348-9911
- 📍 303 South Ave E  
Glen Ullin, North Dakota
- 🌐 [Themillglenullin@gmail.com](mailto:Themillglenullin@gmail.com)

ALSO AVAILABLE IN JAMESTOWN!

2025-2026 North Dakota Hereford Directory





# MONTANA HEREFORD ASSOCIATION

*The Red & White in Big Sky Country*

Updates and Event Details on our website  
[www.montanahereford.org](http://www.montanahereford.org)



*State Tour Fall 2025*  
Eastern Montana & Western North Dakota

*State Tour Fall 2027*  
South Central Montana

 **MontanaHerefordAssociation**

# TOPP HEREFORDS

701.674.3152 // [ToppHerefords.com](http://ToppHerefords.com)



We want to improve the  
profitability of your ranch.  
—Ryan Topp

## MARKETING PROGRAMS FOR TH-SIRED CALVES

### **Feeder Calf Marketing Options**

Through a variety of feeder programs, ranging from spot sales to forward contracting, we can help you capture the added value of your Topp Herefords-sired calf crop.

### **Baldy Heifer Calf Buyback Program**

In partnership with Pitz Farms in Iowa, Topp Herefords buys back about 2500 head annually of first cut, replacement-quality open heifers from our bull clients and are developing relationships placing additional females into trusted programs.

### **Retained Ownership Opportunities**

Retained ownership gives producers the opportunity to capitalize on the full potential of their calves. We are working to introduce our bull customers to the option of retaining ownership of their calves to the rail.

### **Crossbreeding Simplified**

Maximize the number of TH-sired calves that qualify for the TH marketing programs with replacement quality, front end Angus-sired females bred to Topp Herefords bulls.

# TOPP HEREFORDS

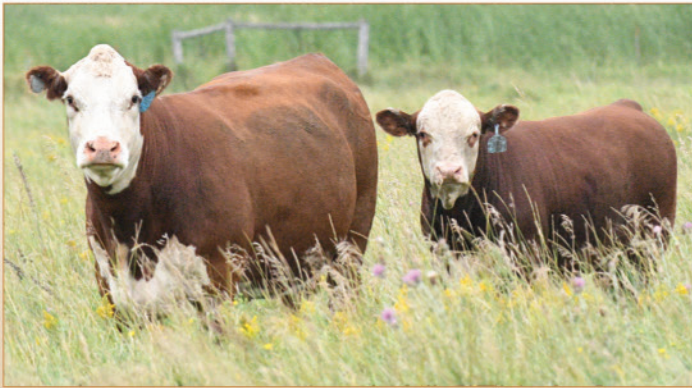
701.674.3152 // [ToppHerefords.com](http://ToppHerefords.com)

Selling 260+ Hereford Bulls Annually

## **Topp Herefords Bull Sale**

**2<sup>nd</sup> Friday in February**

At the Ranch, Grace City, ND



**Quality genetics and marketing programs  
for ranchers who sell 'em by the pound.**

### **A Common Sense Approach to Genetic Excellence**

Sound, dependable, proven genetics • Real-world data

Large numbers of ET and AI siblings for consistency

Wintering and delivery options • Feeder calf marketing

Replacement-quality heifer solutions

**Topp Herefords**

**701.674.3152**

[info@toppherefords.com](mailto:info@toppherefords.com)

1157 83rd Ave NE  
Grace City, ND 58445

# L BAR W


CATTLE COMPANY

## PRODUCTION SALE

Tenth Annual

Eleventh Annual

MARCH 12, 2025    MARCH 11, 2026

AT THE RANCH & ONLINE  ABSAROOKEE, MT



*Selling horned yearling and age advantaged  
Hereford bulls, select females & commercial heifers.*



LW 075 DOMINO 3065L ET  
REG: 44458358

LW 7131 DOMINO 075H ET  
REG: 44147154



LW 1103 DOMINO 3076L ET  
REG: 44458239

**HORNED HEREFORDS** *raised and developed*  
*for LONGEVITY, FERTILITY and PREDICTABILITY*

**For semen sales, catalog request and more  
information [www.LBarW.com](http://www.LBarW.com)**

scan me



Carl & Denise Loyning    Mike & Jeannette Walen       
(406) 425-2252 (c)    (406) 425-2484 (c)    lbarwherefords@gmail.com

# QUALITY POLLED HEREFORD — BULLS AND FEMALES — FOR SALE AT PRIVATE TREATY



We offer  
25 coming  
2-year-old bulls  
and  
30 to 40 yearling  
heifers annually

## WINTER HEREFORD RANCH


Jason & Linda Winter

701-884-2424 • Jason's cell 701-799-9537

Kevin & Julie Bender

701-884-2417 • Kevin's cell 701-693-5046

*Visitors always welcome at our ranch 5 miles north of Goodrich, ND*

*Find us on Facebook* 



# Roughrider Feeds

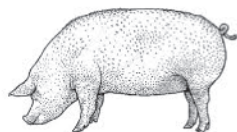
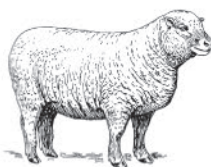


Jeff & Leann Schafer

**701-947-2568**

Your full service Purina, QLF,  
QLF Agronomy,  
Werk Weld, Arrowquip dealer.

Call us for your livestock feed and  
equipment, pet food and  
liquid crop starter.



# Roughrider Feeds

5810 19th St. NE

New Rockford, ND 58356

701-947-2568



# RED & WHITE Since 1918

Focusing on Structural Correctness • Good Feet & Legs  
Maternal Qualities • Fertility • Sound Udders & Teats  
Balanced EPDs • Carcass Traits • Pigment

## • BULLS FOR SALE PRIVATE TREATY •

Sired by F DISTINCT 259 and F PERFECT STORM 277

*The 2025 calf crop is sired by Huck & Endure (pictured below)*



**L3 B413 Desert Value 219 "Huck"**

BW 3.0 WW 64 YW 99 MM 35 M&G 66  
REA .97 Marb .56 CHB\$ 170

*In the top 2% for REA and Marbling.*

*In the top 4% for BII & CHB.*

*Top selling bull in Largent's 2024 sale.*

*First calves arrive spring of 2025.*



**F Endure 180**

BW 3.5 WW 74 YW 126 MM 32 M&G 69  
REA .99 Marb .52 CHB\$ 218

*In the top 1% for YW, CW, REA,*

*BII & CHB. In the top 2% for BMI, top 3%  
for MRB and WW.*



### • Polled & Horned •

For more information contact:

*Bayers Hereford Ranch*

Jill Bayers Hotchkiss

[jbh@herefordamerica.com](mailto:jbh@herefordamerica.com)

605/490-1409

13823 Beaver Creek Pl. • Reva, SD 57651

[www.BayersHerefordRanch.com](http://www.BayersHerefordRanch.com)





# Giedd Hereford Ranch

**BULLS FOR SALE  
PRIVATE TREATY**



## SONS OF...

- HH ADVANCE 8132F
- HH ADVANCE 0074H
- HH ADVANCE 1181J
- HH ADVANCE 0011H
- HH ADVANCE 0159H



**Mark, Wanda and Shane Giedd - Ashley and Trevor Woolley**

**701-315-0230 MARK - 701-315-0537 SHANE**

**552 18th Ave SW - Washburn, ND 58577**

**gieddherefordranch@outlook.com**

**WWW.GIEDDHEREFORDRANCH.COM**



# BEHM

---

## *Polled Herefords*



### **K HOUSTON 3180L**

Sire: SHF HOUSTON D287 H086

**BW 2.2 • WW 72 • YW 116 • SC 1.7 • M 36 • MG 72**

**FAT -0.007 • REA 0.93 • MRB 0.14 • CHB\$ 140**

**OTHER SIRES:** SHF KEYSTONE F158 K396 ET, H B DISTINCT  
and BAR JZ ON DEMAND

- **2 year old bulls for sale •**
- **F1 BWF Bred Heifers For Sale Every Fall •**

# BEHM

---

## *Polled Herefords*

Larry and Aneica Behm  
Larry (c) 701-870-0227 • (h) 701-873-2646

Logan and Maci Behm  
Logan (c) 701-891-9227

5944 Hwy. 1806, Beulah, ND 58523  
behmpolledherefords@gmail.com

**behmpolledherefords.com**

# Friesz LIVESTOCK

PRODUCING HERFORD CATTLE THAT PERFORM

Replacement heifers,  
bred heifers  
and bulls  
for sale at private treaty.

**AI SIRES:**

CSC 004 HOOTENANNY

**HERD SIRES:**

TTFL 1613 174E FRONTIER 1907

CKP Forward 3297

JDH 137F 16G Standout 40K ET

OHR Heavy Weight 158C 71L



# Friesz LIVESTOCK

PRODUCING HERFORD CATTLE THAT PERFORM

Duane, Joana, Taylor, Thomas and Jaime Friesz  
4465 34th St., PO Box 67, New Salem, ND 58563  
701-400-8744 Joana cell – 701-400-3569 Thomas  
701-400-3277 Taylor – 701-256-0006 Jaime  
frieszlivestock@gmail.com

Like us on  
Facebook



[www.frieszlivestock.com](http://www.frieszlivestock.com)

# OHR ... High Quality Herefords Since 1936!

## Holland

No other bull in the breed with his level of CED & REA matches his combination of Marbling & CHB or Marbling & YW or YW & CHB! In addition to his numbers to the right he is in top 9% for CED, 7% for SC, 1% for CW, 8% for BMI and 5% for BII! Homozygous Polled. Owned with Candy Meadow Farms. Semen 40\$ - non cert.



BW	1.0	1%
WW	78	1%
YW	127	1%
M	39	1%
TM	78	1%
REA	1.16	1%
Marb	.37	8%
CHB	196	1%

**CMF OHR 250D Holland 625H**

Endure x Anodyne x Federal

## Imprint

Homozygous Polled. In top 3% for Udder, 4% for Teat, 6% for REA and 7% for WW and a breed improver for 16 of 20 traits! BW 80 lbs, 110 ratio REA, 107 ratio IMF, 44cm scrotal at 21months, 2061 @ 2 yrs. Owned with Topp Herefords and Jim McFaden. Semen 40\$ - non certificate.



BW	3.7	7%
WW	70	7%
YW	98	7%
M	29	7%
TM	64	6%
REA	.79	6%
Marb	.10	6%
CHB	130	6%

**TH 6153 Imprint 956J ET**

Blueprint x Mr Hereford x 29F

## Solid Gold

In the top 2% of the breed for Marbling, BMI, BII and CHB. Top 4% for SCF, top 8% for CED and Top 9% for CW. Homozygous polled, very heavy muscled, fully pigmented and long bodied! Semen for sale on him and his brother OHR 543G Gold Power 779K. Both priced at 40\$ - non certificate.



BW	1.4	2%
WW	63	2%
YW	98	2%
M	25	2%
TM	56	2%
REA	.87	2%
Marb	.53	2%
CHB	145	2%

**OHR 396F Solid Gold 800K**

Gold Rush x Excede x X51

Olson's **Red Power** Bull & Female Sale - Feb. 20, 2025

Contact:

# OLSON

## Hereford Ranch

16068 24th St SE - Argusville, ND 58005

Carl, Lindsay, Dru and Stetson Olson - Edward and Jeanne Olson

Carl 701-361-0684 ~ Lindsay 701-388-5801 ~ olsoncandc@aol.com

[www.olsonredpower.com](http://www.olsonredpower.com)

Breeding High Quality Registered Cattle Since 1936!



*In times like these we need to*  
**STICK  
TOGETHER.**

We need to stick together and provide a strong, unified voice for our industry. For more than nine decades, the North Dakota Stockmen's Association has provided that voice for our state's cattle ranchers. The organization's strength comes from grassroots members like you, and the more members we have, the more effective we are. We need to stick together, and we invite you to join the NDSA.

*North Dakota*  
**STOCKMEN'S ASSOCIATION**



**North Dakota Stockmen's Association**  
**407 S 2nd St. • Bismarck, ND 58504**  
**701-223-2522 • [www.ndstockmen.org](http://www.ndstockmen.org)**



# AM I FULL OF CRAP?

Calf scours are not inevitable. A strong prevention program is non-negotiable. Dependable scour prevention is essential for calf welfare, employee morale and business profitability. The immune system's response to vaccination is variable and unpredictable. That's why giving preformed antibodies instead of relying on a vaccine to stimulate antibody production is so important. I'm all for removing uncertainties. So yes, I stand by this product. (And no, I'm not.)

Learn more at  
[FirstDefenseCalfHealth.com](http://FirstDefenseCalfHealth.com)

*Marissa Hake, DVM*  
Calf Vet

© 2020 Immucell Corporation. All Rights Reserved.



**THE BEST VACCINE FOR SCOURS,  
ISN'T A VACCINE.**



K  
I  
S  
T



Livestock  
Auction  
Company

Jerry and Bill Kist  
Yard Telephone 701-663-9573  
Toll Free 1-800-732-1163

---

Between Mandan and Bismarck on Highway No. 10

---

Regular Sales Wednesday . . .

Horse Sales  
as Scheduled

Field Rep –  
Matt Lachenmeier 701-426-7638

[www.kistlivestockauction.com](http://www.kistlivestockauction.com)



**Kevin Murnin**

P.O. Box 105 • Worden, MT 59088  
406-853-4638 • [kmurnin@hereford.org](mailto:kmurnin@hereford.org)

American  
**HEREFORD**  
FIELD REPRESENTATIVE

for the

**Mountain Region #2**

Montana, Wyoming, Colorado, North Dakota  
and western Canada

---

**Give me a call if you are interested in:**

- Assistance in marketing your Hereford seedstock and commercial females
  - Placing an ad in the Hereford World
  - Creative Services projects, including sale catalogs, flyers or brochures
  - Buying or selling Hereford-influenced feeder calves
  - Marketing cattle through the CHB® program
- 

**American Hereford Association**

11500N Ambassador Dr., Suite 410 • Kansas City, MO 64153  
816-842-3757 • [www.hereford.org](http://www.hereford.org)



# **STOCKMEN'S LIVESTOCK EXCHANGE Dickinson, North Dakota**

**701.225.8156 Office**

stlx@gostockmens.com

815 Livestock Lane  
Dickinson, ND 58601



John Fischer  
Owner  
701.290.1606

Austin Henderson  
Owner  
701.471.2673

Daniel O'Donnell  
Owner  
406.939.0526

## **HEREFORD** *America*

Largest privately-owned Hereford newspaper in North America.

Jill and Marc Hotchkiss  
13823 Beaver Creek Place • Reva, SD 57651  
605/866-4495 (office) • 605/490-1409 (cell)

**www.herefordamerica.com**



• 7 Issues Per Year — Jan., Feb., Mar.,  
Apr./May, Sept., Oct., Nov./Dec.

• Ad and Editorial Deadlines  
5th of Preceding Month

*Serving  
Registered  
and  
Commercial  
Hereford  
breeders  
since 1996.*

# North Dakota Hereford Association

## 2025-2026 Membership

### **Bruce Anderson**

315 14th St. NE  
Valley City, ND 58072  
701-845-3567

Cell: 605-490-1409  
jbh@herefordamerica.com

### **Bailey Ranch**

Terry W. or Taylor L. Bailey  
6091 3rd Ave N  
Towner, ND 58788  
Home: 701-537-5524  
Cell: 701-537-4144

### **Larry J. Behm and Family**

5944 Hwy 1806  
Beulah, ND 58523  
Home: 701-873-2646

### **Logan Behm**

5944 Hwy 1806  
Beulah, ND 58523  
Cell: 701-891-9227  
lbbaseball.4@gmail.com

### **Lillie Basaraba**

7150 10th St. SW  
Golden Valley, ND 58541  
701-880-8261  
ltessier75@gmail.com

### **Coffin Butte Farm and Ranch**

Mathew and Alecia Tishmack  
8450 74th Ave SW  
New Leipzig, ND 58562  
Home: 701-584-2777  
Cell: 701-391-2979  
701-527-6036  
coffinbuttefarmandranch@hotmail.com

### **Baumgarten Cattle Co.**

4260 127th Ave. SW  
Belfield, ND 58622  
Home: 701-575-8292  
Cell: 701-290-3469  
trbaumgarten@yahoo.com

### **DaKitch Farms**

Matthew and Darci Kitchell,  
Dawson and Dutton  
1997 355th St.  
Ada, MN 56510  
Matthew: 701-799-7690  
Darci: 701-256-4094  
www.dakitchfarms.com

### **Jake Baumgarten**

4260 127th Ave. SW  
Belfield, ND 58622  
Cell: 701-290-3450

### **Jerrin Baumgarten**

15715 41st St. SE  
Durbin, ND 58059  
701-866-5624  
jerrin.baumgarten@outlook.com

### **Matt and Jacee Davis**

7667 5th St. NE  
Carrington, ND 58421  
Matt: 701-307-0564  
Jacee: 701-789-1487  
j2nlivestock@gmail.com

### **Bayers Hereford Ranch**

Jill (Bayers) Hotchkiss  
13823 Beaver Creek Pl.  
Reva, SD 57651

**Diamond R Herefords**

Randy and Julie Lemm Family  
623 166th Ave. SE  
Hillsboro, ND 58045  
Home: 701-636-5465  
rdlemm@yahoo.com

**Diamond T Herefords**

Luke Erickson  
17501 46th St. SW  
Minot, ND 58701  
701-721-5383  
diamondtranch@gmail.com

**Donnelly Farms**

3326 109th Ave. SE  
Valley City, ND 58072  
Cell: 651-353-7282  
dan.donnelly@bankforward.com

**Dustin and Megan Dukart**

107 5th St N.  
Richardton, ND 58652  
Cell: 701-290-7230  
Cell: 701-730-4335

**EF1 Cattle Co.**

18301 254th St. NW  
Carpio, ND 58725  
Cell: 701-833-9699  
ef1cattle@gmail.com

**Rod and Jenny Fernow**

13091 47th St. SE  
Fingal, ND 58031  
701-840-8981  
rfernnow@yahoo.com

**Flath Herefords**

1431 33S Ave. NW  
Coleharbor, ND 58531-9401  
Mark's Cell: 701-337-6793  
Richard's Cell: 701-337-6076  
richardflath56@gmail.com

**Aaron Friedt**

PO Box 293  
Mott, ND 58646  
701-590-9597  
afriedt@hereford.org

**Friedt Herefords**

Gary and Kirsten Friedt  
8733 55th St. SW  
Mott, ND 58646  
Home: 701-824-2300  
gfriedt@hotmail.com

**Friesz Livestock**

Duane, Joana, Taylor,  
Thomas & Jaime  
PO Box 67  
New Salem, ND 58563  
Home: 701-843-8750  
Cell: 701-400-8744  
joana@northlandinsuranceagency.com

**Giedd Herefords**

Mark, Wanda, Ashley and Shane  
552 18th Ave. SW  
Washburn, ND 58577-9532  
Home: 701-462-3310

**Heart F Herefords**

Aaron and Sara Friesz  
7450 59th St SW  
New Leipzig, ND 58562  
701-584-2978  
Cell: 262-939-4280  
friesz.sara@yahoo.com

**Helbling Herefords**

4785 County Road 83  
Mandan, ND 58554  
Jim : 701-663-7123  
Fred: 701-663-0137  
Wayne: 701-663-1229  
helbling95@msn.com or  
400herefords@gmail.com

**Andrew and Theresa Heinrich**

PO Box 147  
Almont, ND 58520  
Home: 701-843-9488  
Cell: 701-595-1795  
milliron43@gmail.com

**Clayton Heins**

3320 45th Ave.  
New Salem, ND 58563  
701-400-4435  
rockingh@westriv.com

**Jack Hoffmann**

107 Front St.  
Emden, ND 58079  
Cell: 701-238-2383

**Huso & Sons**

11921 17th St. NE  
Aneta, ND 58212

**JS Ranch**

John Schmaltz  
4140 33rd St. SE  
Tappen, ND 58487  
701-320-9101  
jodyschmaltz@hotmail.com

**Walter Jones**

34990 300th Ave. NE  
Gatzke, MN 56724  
218-689-3373  
walterjon08@gmail.com

**Kuelbs Cattle Co.**

Todd and Elizabeth Kuelbs  
4295 127th Ave.  
Belfield, ND 58622  
320-232-0404

**Michael Kurle**

45601 93rd St. NE  
Regan, ND 58477-9725

**Lodoen L83 Ranch**

1421 104th St NW  
Westhope, ND 58793  
Cell: 701-201-0477

**Midway Polled Herefords**

Bill Smith  
7480 26th St. NE  
Sheyenne, ND 58374-9182  
Home: 701-996-3300

**Mrnak Herefords**

14503 91st Ave. SW  
Bowman, ND 58623  
Terry - 701-574-3193

**Andy Mrnak**

PO Box 178  
Bowman, ND 58623  
Cell: 701-206-1095  
andy@pifers.com

**Brent and Jenna Mrnak**

203 3rd Ave. SW  
Bowman, ND 58623  
701-206-0604  
bmrnak@gmail.com

**Neshem Livestock**

6001 226th NW  
Berthold, ND 58718  
701-883-3462  
sixneshems@gmail.com

**Olson Hereford Ranch**

Carl Olson  
16068 24th St SE  
Argusville, ND 58005  
Home: 701-484-5068  
Cell: 701-361-0684  
olsoncandc@aol.com

**Pelton Polled Herefords**

Craig Pelton  
40 93rd Ave. NW  
Halliday, ND 58636  
Home: 701-548-8096  
Cell: 701-260-0058  
craigp@ndsupernet.com

**Pollestad Herefords**

Steve Pollestad  
2525 92nd Ave. SW  
Taylor, ND 58656  
Home: 701-974-3970  
pollestad@ndsupernet.com

**Rockeman Herefords**

90 1st Ave SE  
Donnybrook, ND 58734  
Cell: 701-720-3682  
crockeman@gmail.com

**Darold Schimming & Sons**

4955 145th Ave. SE  
Enderlin, ND 58027  
Cell: 701-238-8326  
cowhide36@hotmail.com

**Stroh Hereford Ranch**

1010 Hwy 22 S.  
Killdeer, ND 58640  
Home: 701-573-4373  
Cell: 701-290-1191  
E-mail: acmecatl@ndsupernet.com

**Stuber Ranch**

7606 149th Ave. SW  
Box 56  
Bowman, ND 58623  
Home: 701-523-5371  
Cell: 701-523-6813  
stuberranch@ndsupernet.com

**Sunrise Ranch**

Terry and Kevin Nelson  
4685 31st Ave.  
Mandan, ND 58554  
Home: 701-663-3012  
Cell: 701-391-7328  
sunriseranch3012@gmail.com

**Tessier Ranch**

Zach & Larissa Tessier  
12950 43rd St SW  
Belfield, ND 58622  
Cell: 701-290-6132  
bullrider\_169@hotmail.com

**Larry and Richard Tinjum**

8334 Hwy 50  
Powers Lake, ND 58773  
701-464-5771  
ltinjum@nccray.com

**Topp Herefords**

1157 83rd Ave NE.  
Grace City, ND 58445  
Home: 701-674-3152  
Cell: 701-652-5701  
info@toppherefords.com

**Winter Ranch**

Jason Winter  
1990 10th St. NE  
Goodrich, ND 58444  
Home: 701-884-2424  
Cell: 701-799-9537  
winter.ranch@yahoo.com

**Trevor and Ashley Woolley**

602 Westridge St.  
Underwood, ND 58576  
701-315-0232

**Wolff Polled Herefords**

122 N 12th St. Apt. 3  
Oakes, ND 58474-1436  
Cell: 701-710-1574  
swolff318@yahoo.com

# Pelton Polled Herefords

Annual Bull Sale: First Monday in February

**40 93rd Ave NW  
Halliday, ND 58636**

Craig Pelton: 701-260-0058

Kayla and Tyrun Dorrell: 701-260-2768

Kain and Abbey Pelton: 701-260-8434

[info@peltonpolledherefords.com](mailto:info@peltonpolledherefords.com)

[www.peltonpolledherefords.com](http://www.peltonpolledherefords.com)

CSC 004 Hootenanny 206

Other sires include CSC 701 Boulder 901  
and TH Innovation 2567 ET



# STUBER RANCH...

OVER 107 YEARS BREEDING — *HEREFORDS*

ANNUAL SALE THIRD SATURDAY IN APRIL AT THE RANCH

*Program based on production, product and profile*

*Selling fall and spring yearling bulls, registered heifers and commercial females*

**FEATURING LONG BODIES, THICK BACKS, WIDE QUARTERS,  
EXTRA MILK, GOOD DISPOSITIONS and CORRECT MADE**

## OUR NEW ADDITIONS



**CHURCHILL STANFIELD 3122L**

44462187

CED 1.7 BW 4.6 WW 79 YW 136 M 45 REA 0.75  
MARB 0.33 BMI\$ 483 BMI\$ 162

*Covers all the bases*



**SR DEEP CREEK 23L**

44470859

CED 6.1 BW 3.5 WW 72 YW 130 M 44 REA 0.88  
MARB 0.23 BMI\$ 388 BMI\$ 171

*Truly an "elite individual"*

## FIRST YEAR SIRES

**UU GREAT PLAINS 2008K**

44332179

CED 8.6 BW 1.1 WW 65 YW 107 M 36  
REA 0.51 MARB 0.14 BMI\$ 356 CHB\$ 119  
CALVING EASE, CORRECT LOOK

**CHURCHILL TRANSLATOR 273 ET**

P4378166

CED 0.8 BW 3.2 WW 70 YW 119 M 32  
REA 0.95 MARB 0.19 BMI\$ 399 CHB\$ 169  
SUPER LONG, THICK, MUSCLE

**SR DOMINATION 1172K ET**

44364443

CED 7.6 BW -0.4 WW 57 YW 98 M 32  
REA 0.38 MARB 0.27 BMI\$ 406 CHB\$ 144  
SUPER WIDE, RIB, DATA

## PROVEN SIRES

**BCC DOMINATOR 619D**

43732924

**SR DOMINATE 308F ET**

43954712

**HH ADVANCE 0159H**

44128721

**WHR 290E B901 BEEFMAKER 250GET**

44064215

**CL 1 DOMINO 993G 1ET**

44010186

**UU BAKKEN 8027F**

43902414

**BIRDWELL VANGUARD 5022 9337**

P44021997

**SR EXPEDITION 619G ET**

P44054044

**STARDANCE M8086 ET**

43989449

## SEMEN AVAILABLE ON MOST SIRES

*Let us put you on our mailing list.*

Visit us at [stuberranch.com](http://stuberranch.com) for pictures and pedigrees.

*Visitors  
welcome  
anytime.*

# STUBER RANCH

7606 149th AVE SW BOX 56 BOWMAN, ND 58623

ROGER 701-523-5371

SALE BARN 701-523-3522

DUANE 701-523-3496

cell 701-523-6813

MAC 701-440-0015

cell 701-523-1479

contact us at [ddstuber@ndsupernet.com](mailto:ddstuber@ndsupernet.com)

10 miles north of Bowman or 16 miles south of Amidon on Hwy 85, then 5 miles west, 1/2 mile south.

2025-2026 North Dakota Hereford Directory

77 years of raising cattle with today's cattleman in mind

## STROH HEREFORD RANCH

*Ranch-Ready Genetics*

# ANNUAL PRODUCTION SALE FIRST THURSDAY IN FEBRUARY

44459640  
CE 5.2  
BW 3.4  
WW 68  
YW 102  
MM 26  
M&G 60  
Fat 0.062  
REA 0.47  
MRB 0.38  
BMI\$ 364  
CHB\$ 154

*Maternal driven  
performance sire  
from Coopers.*



**CL 1 DOMINO 394L 1ET**



C03094827  
CE 3.2  
BW 3.4  
WW 53.9  
YW 82.1  
MM 26.1  
M&G 53.1  
Fat 0.062  
REA 0.43  
MRB 0.04  
BMI\$ na  
CHB\$ na

*Thick, long made  
outcross sire.*

**BR 234F FORTY CREEK 63K**

*Herd Bulls:* H5 10Y HOMETOWN 6194, BR 69D GRAND SLAM 118G,  
CL 1 DOMINO 079H, JH ADVANCE 0227H, XTC 83G SUPER RIB 1J,  
KL DESERT TORO 1010, BR 234F FORTY CREEK 63K, JH L1 DOMINO 221K,  
JH L1 DOMINO 241K, CL 1 DOMINO 394L 1ET, H5 1115J DOMINO 371  
and KL 728 DESERT EXPLOSION 355

## STROH HEREFORD RANCH

Like us on: Follow us on:



Mike, Dawn, Lucas & Matthew Stroh

1010 Hwy 22 S, Killdeer, ND 58640 • 701-573-4373

Mike's Cell: 701-290-1191 • Matt's Cell: 701-690-4860

acmecatl@ndsupernet.com • strohherefords.com